

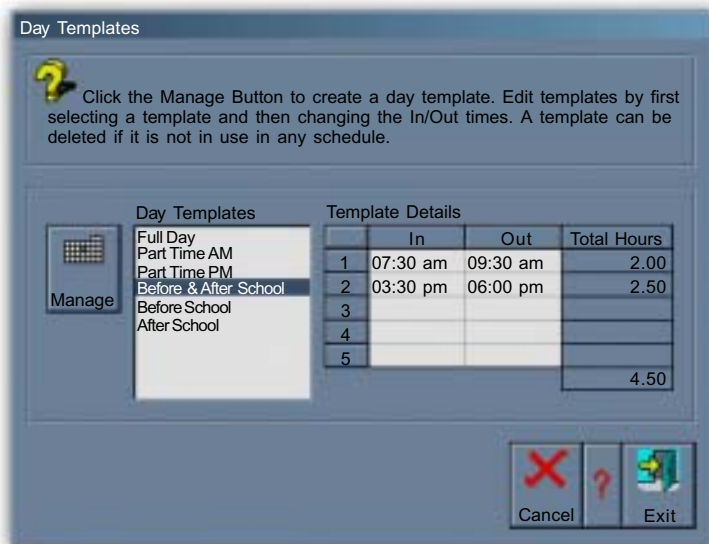
# Advanced Scheduler



Requires Family Data

## Calendar-based scheduling keeps your enrollment on track.

Perfect for school-age programs, year-round schools, summer programs and camps. Advanced Scheduler has the look and feel of a regular calendar with the ability to create unlimited templates.



## Features Include:

- User Defined Templates and Labels
- Multiple In/Out Times
- Track Individual/Universal Vacation or Closed Days
- Forecast Upcoming Enrollment
- Simplified Schedule Based Billing
- Sign In/Out and Roll Call Sheets



## Reports Include:

- Daily/Weekly Schedule
- Data reflected throughout Family Data & Food Program Scheduling of Enrollment Reports.

